

**Blind Pass Restoration  
Weekly Progress Report  
April 19<sup>th</sup> thru May 2<sup>nd</sup>, 2009**

	Contractor: Energy Resources Inc.		
Original Contract Time:	220 days	Time Remaining:	67 days
Estimated Volume:	152,683 cyds	Volume Placed:	105,281 cyds
Required Production Rate:	707 cyds/day	Avg. Production Rate:	731 cyds/day

**The following tasks were completed during the weeks of April 19<sup>th</sup> thru May 2<sup>nd</sup>:**

- The Contractor dredged an estimated 6,811 cubic yards during the reporting period. Work efficiency was approximately 20%. The efficiency for the project to date is 44%. Efficiency is calculated as the ratio of total dredging time to total work time.
- The Contractor Completed hauling non-beach compatible material for upland disposal on Tuesday, May 5<sup>th</sup>. Approximately 12,000 yards were removed.
- The Contractor completed dredging operations under Blind Pass Bridge on Tuesday, April 21<sup>st</sup>. Dredge 'Michael' was disassembled in part to fit underneath the bridge.
- Due to inclement wind and wave conditions, Dredge 'Nate' did not conduct operations from Sunday, April 12<sup>th</sup> to Tuesday, April 28<sup>th</sup>.

**The following tasks are anticipated during the week of May 03<sup>rd</sup> thru May 09<sup>th</sup>:**

- The Contractor is expected to begin removing the remaining steel sheet pile walls of the containment cell. The wall closest to the Gulf of Mexico will be remain until dredging is complete. Removal of this wall will be the last step to open Blind Pass.
- Dredging operations are expected to alternate between Dredge 'Nate' in the Gulf and Dredge 'Michael' landward of the remaining sheet pile wall between the hours of 4 am and midnight. Nighttime operations will be at the Contractor's discretion. It is expected only 1 dredge will work at any given time due to limitations with the booster pump and shell content in the sand.
- The Contractor has elected to hand remove all unsuitable material such as asphalt, concrete, and cemented shell from the sand placement area. Additional equipment is not expected for this task.

**Outstanding and other Items to Note:**

- Although dredge production has been down since the beginning of April, the Contractor has completed the truck hauling and removal of 12,000 cyds. This will enable production to increase for a timely project completion.



Monday, May 04, 2009  
Dredging Seaward of Blind Pass  
Bridge

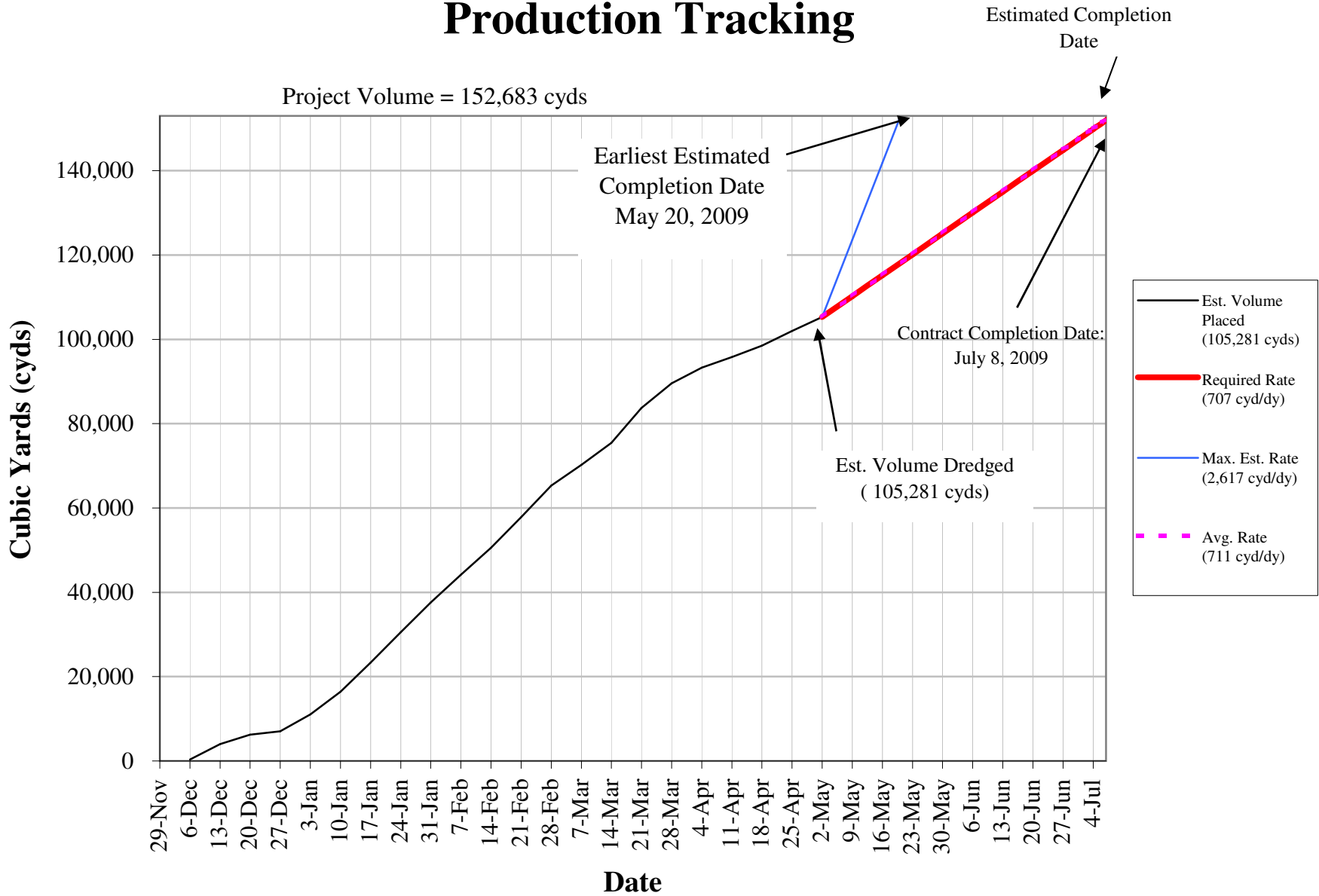


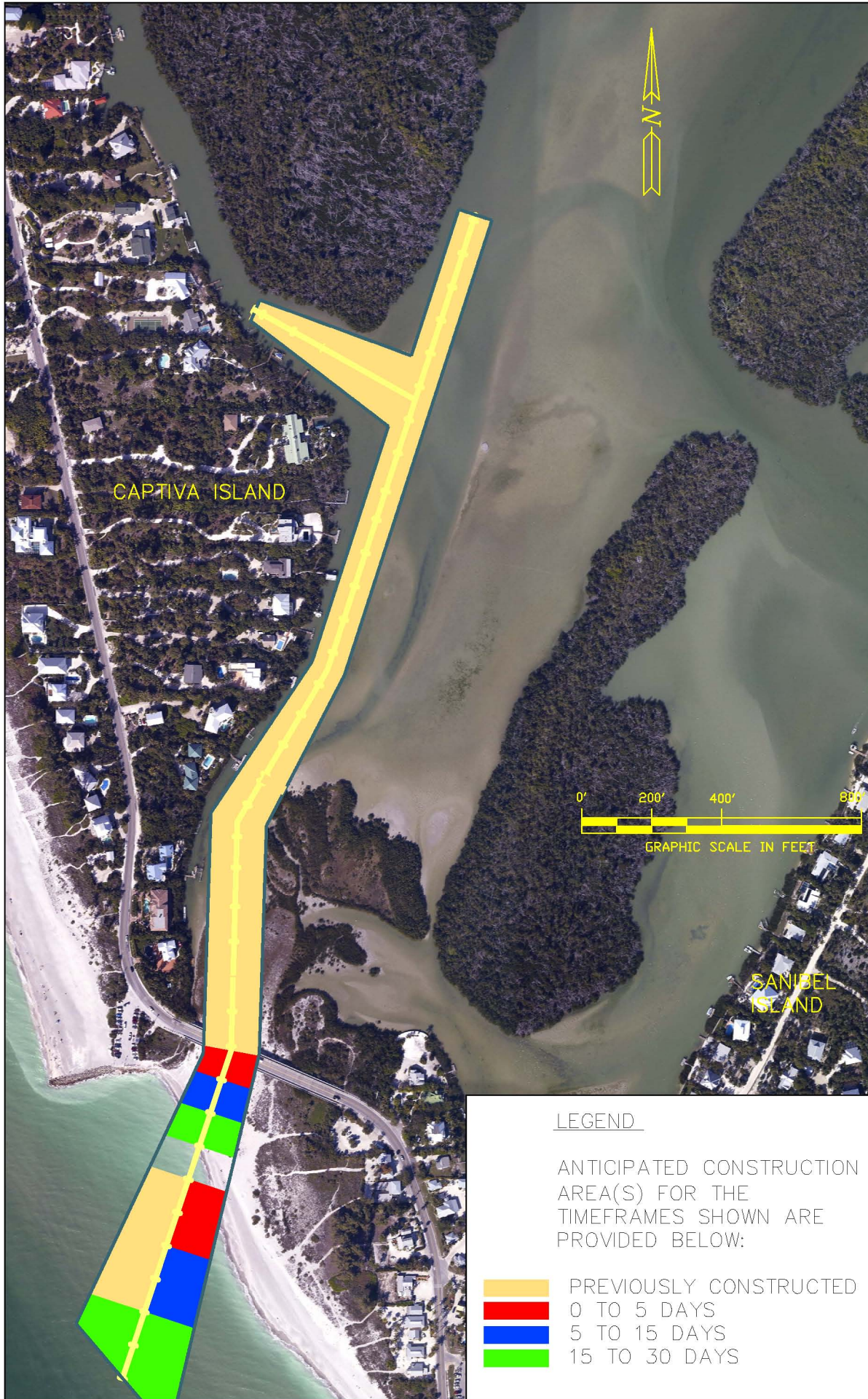
Monday, May 04, 2009  
Truck Loading Operations for the  
Clayey Material at Blind Pass.



Thursday, April 16, 2009  
Dredge 'Nate' on the Beach during  
Rough Seas

# Blind Pass Maintenance Dredging Production Tracking





TITLE:  
 BLIND PASS MAINTENANCE DREDGING  
 CONSTRUCTION SCHEDULE  
 WEEK OF MAY 4, 2009

**NATURAL RESOURCES DIV**  
 1500 Monroe St. Fort Myers, Florida 33901  
 Ph. (239) 533-8109/10 Fax. (239) 485-8408

**LEE COUNTY**  
 SOUTH WEST FLORIDA

FILE: S:\NATRES\MARINE\BEACHMANAGEMENT\  
 BLINDPASS\DRAWINGS\BLINDPASS\_  
 CONSTRUCTION.dwg  
 DATE: 17-NOV-08  
 DRAWN: RBN  
 APPROVED: RBN

LEGEND

ANTICIPATED CONSTRUCTION  
 AREA(S) FOR THE  
 TIMEFRAMES SHOWN ARE  
 PROVIDED BELOW:

- PREVIOUSLY CONSTRUCTED
- 0 TO 5 DAYS
- 5 TO 15 DAYS
- 15 TO 30 DAYS

SCALE:  
 1" = 400'

SHEET:  
 01 OF 01